

# Kountry Kraft Inc.

Custom Built Cabinetry  
Since 1959

291 S. Sheridan Road.  
Newmanstown PA. 17073

Phone 610-589-4575  
Fax 800-401-0584

Pa. Contractor Reg. #PA3557

Cabinet Style: Penn Line - Full Overlay

Wood: Paint Grade Maple

Finish: TBD

Door Style: TW10751 M&T

Lip: L-1160  
Raise: Standard  
Frame Bead: Standard

Top Drw: CRP10751 M&T

Deep Drawer: CRP10751 M&T 2 5/16" Framing

Lip: L-1160  
Raise: P057  
Frame Bead: Standard

Hardware: TBD

Door:  
Drawer:

Hinge: Blum Soft Close

Countertop By Others

Crown Mldg: 3" L Shaped Wall molding

Base Mldg: Toe Kick

Notes:

## NextGen Building & Management

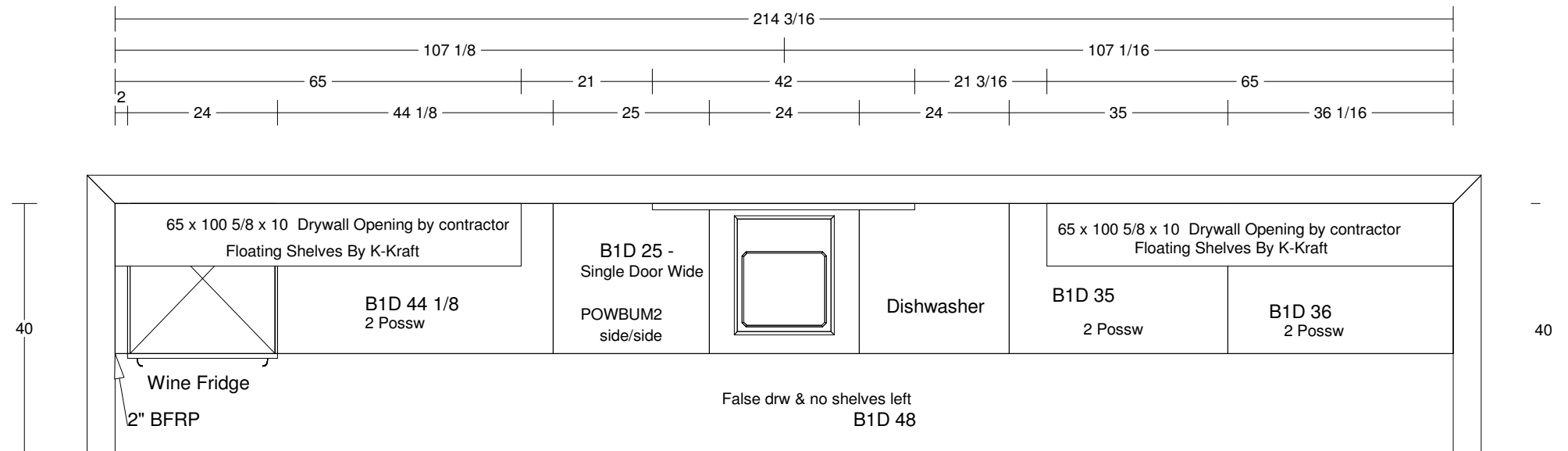
Customer Approval:

Scale: 1/2 Sheet # 11 of 16

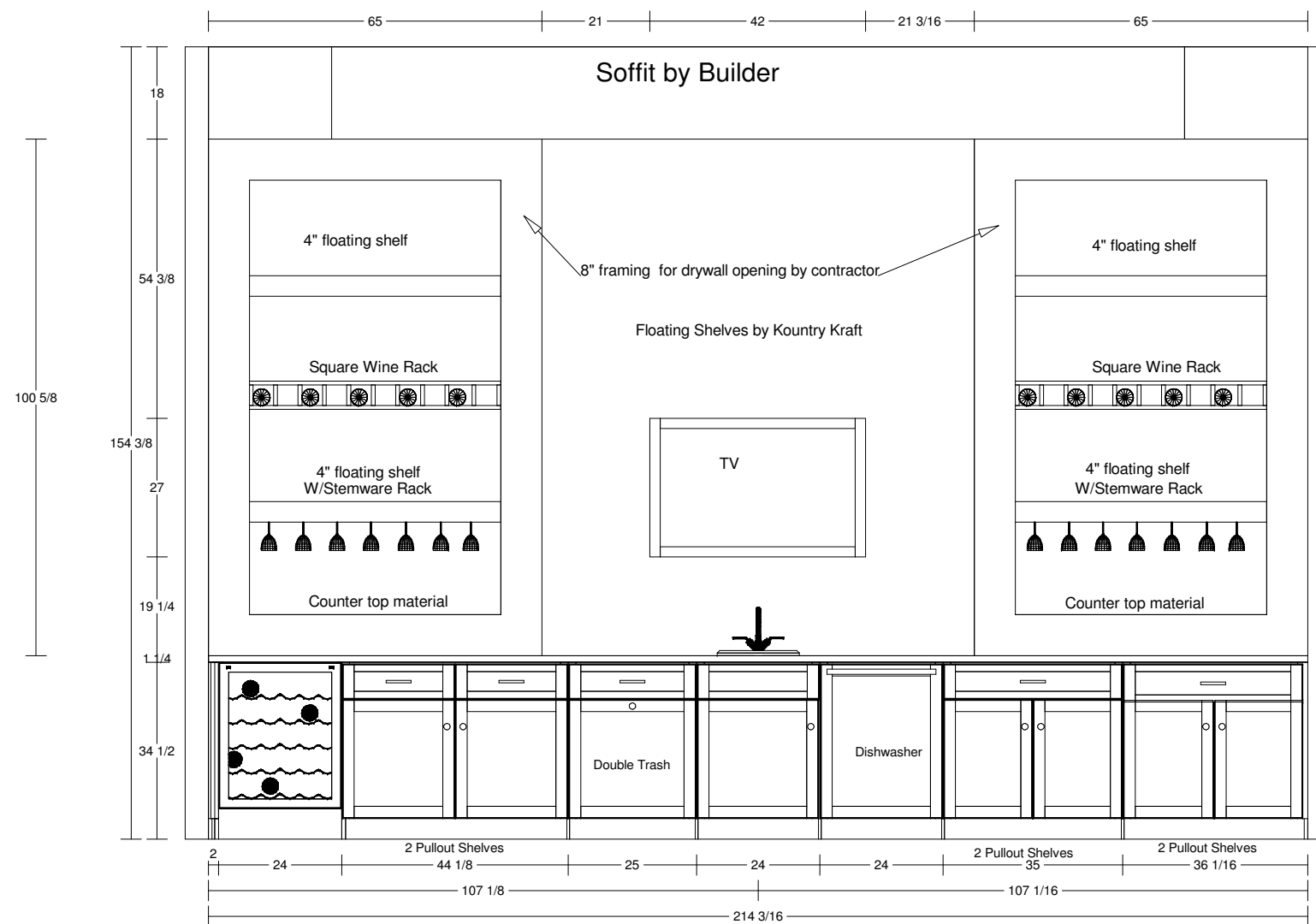
Date: 8/30/16 Revisions: 11/18/16

### Conceptual Drawing

Not to be used for construction purposes.  
This drawing has been issued as a conceptual drawing. It is an artistic interpretation of cabinetry, countertops & appliances. It is not intended for fabrication or construction specifications.



# BAR



# Kountry Kraft Inc.

Custom Built Cabinetry  
Since 1959

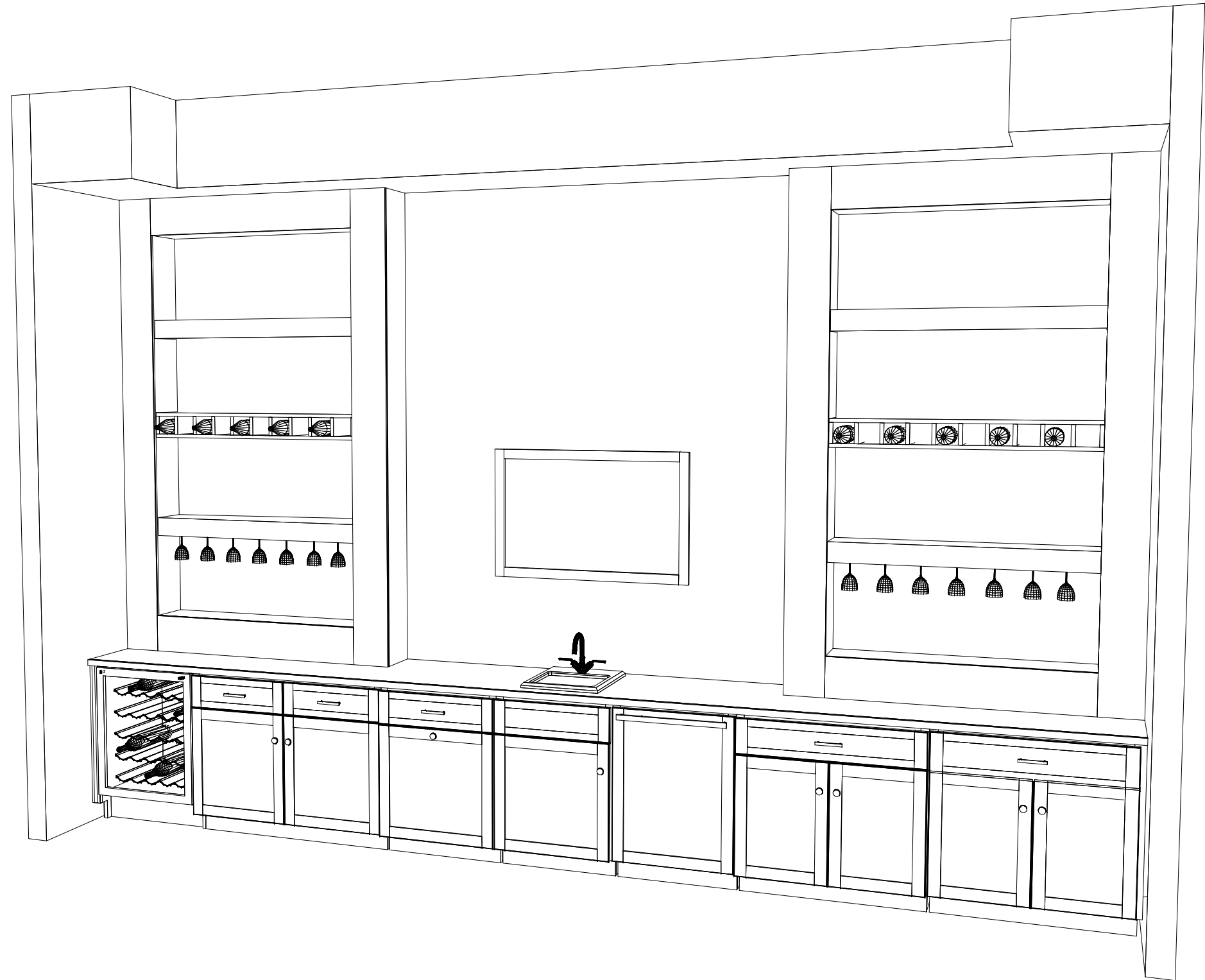
291 S. Sheridan Road.

Newmanstown PA. 17073

Phone 610-589-4575

Fax 800-401-0584

Pa. Contractor Reg. #PA3557



## NextGen Building & Management

Customer Approval:

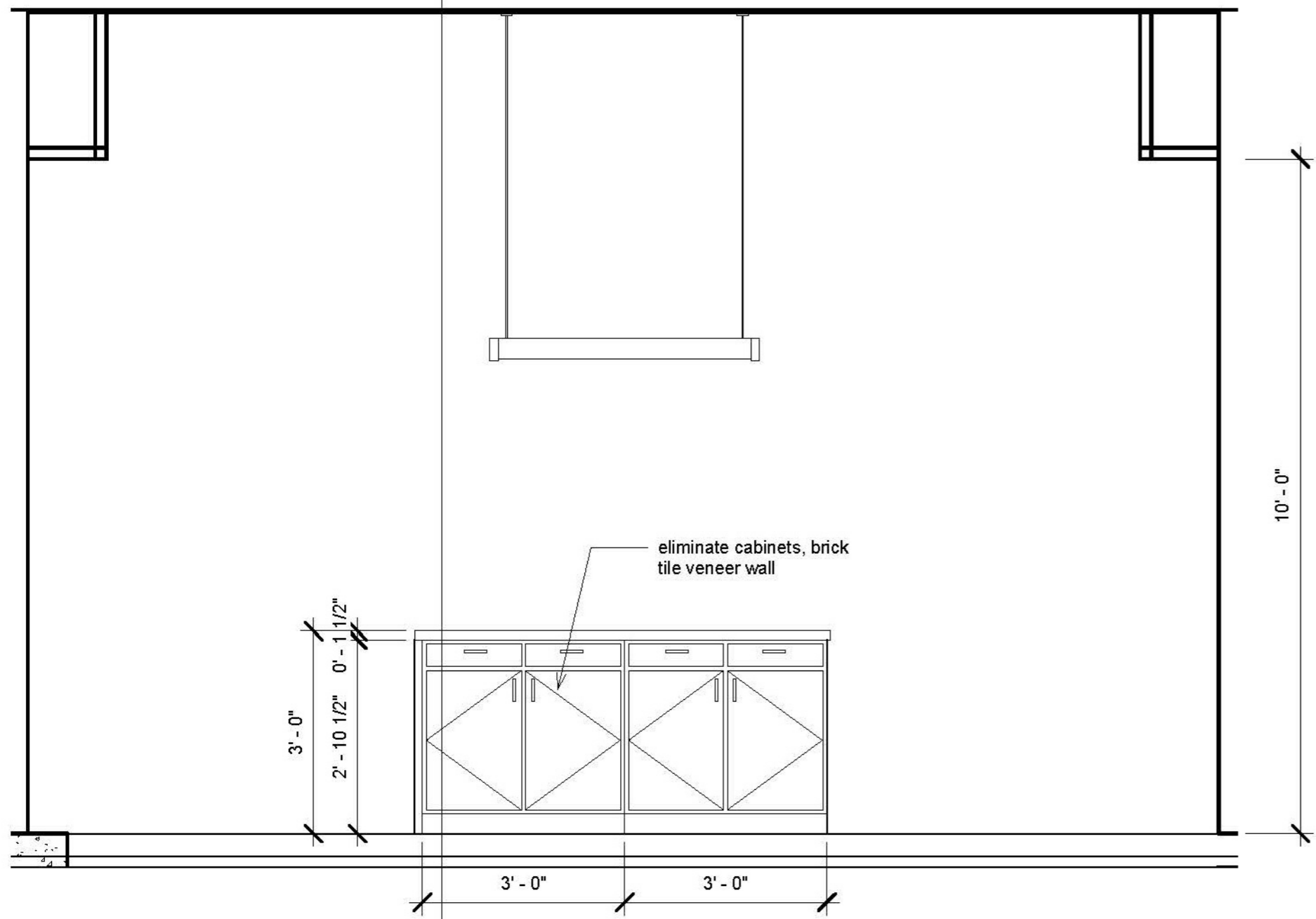
Scale: N/A      Sheet # 12    of 26

Date: 8/30/16      Revisions: 11/18/16

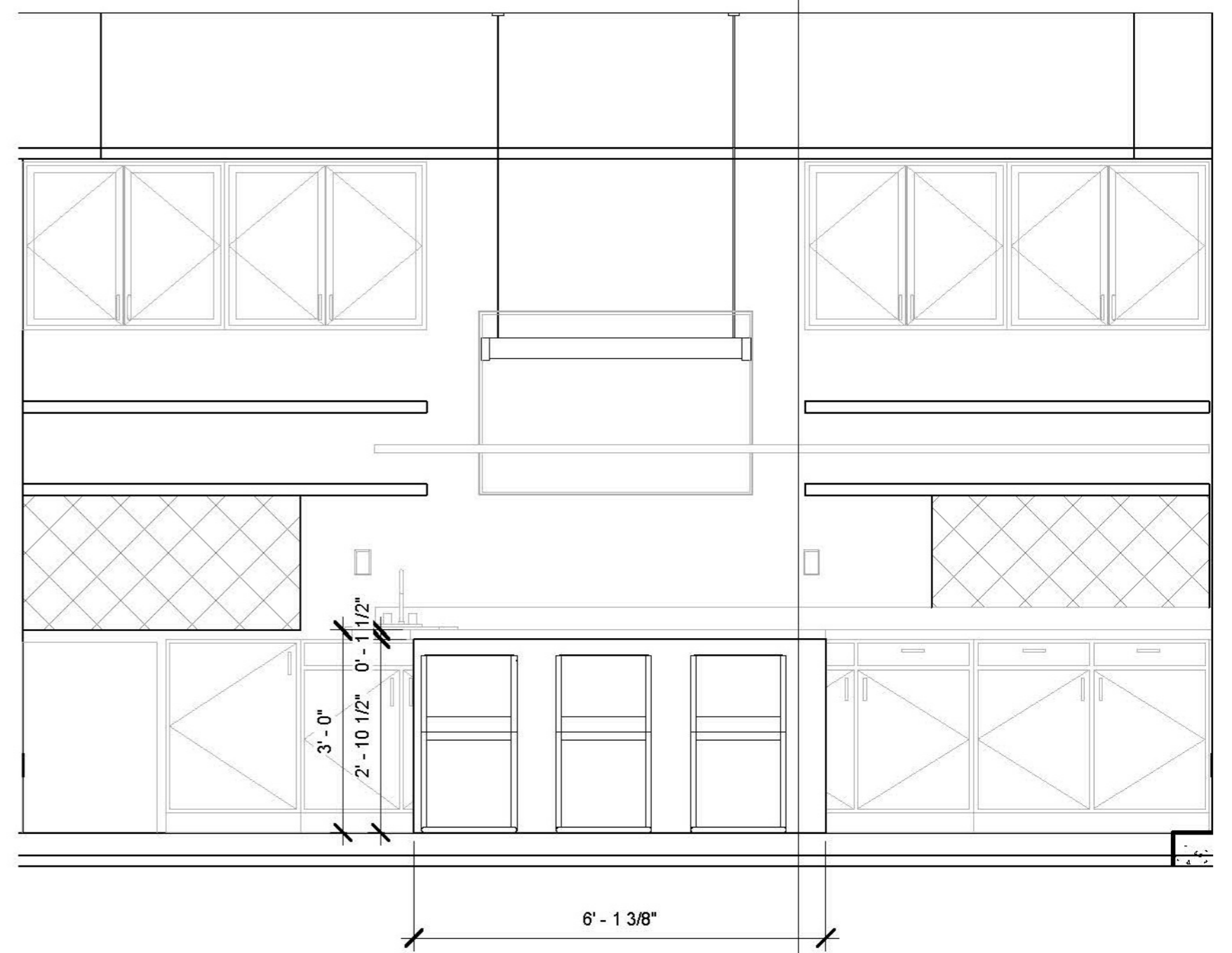
### Conceptual Drawing

Not to be used for construction purposes.  
This drawing has been issued as a conceptual  
drawing. It is an artistic interpretation of cabinetry,  
countertops & appliances. It is not intended for  
fabrication or construction specifications.

Option for Island  
with Pendant Light



9 Wet Bar Elevation B  
1/2" = 1'-0"



10 Wet Bar Elevation C  
1/2" = 1'-0"